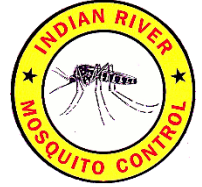


Indian River Mosquito Control District



Commissioner Janice Broda ♦ Commissioner Matt Erpenbeck ♦ Commissioner Anna Kirkland
Sherry Burroughs, Executive Director
5655 41st Street, Vero Beach, FL 32967 ♦ Phone: 772.562.2393
<http://irmosquito.com> ♦ irmcd@irmosquito2.org

February 5, 2025

The Indian River Mosquito Control District is accepting applications for the Coastal Inspector I position. There are 2 vacant positions available.

Hourly Rate: \$20.08/HR

Some of the benefits offered by the District include:

- Paid Time Off
Medical and Annual leave accrual
11 Paid Holidays
- FRS Retirement
- Group Life Insurance
- Medical, Dental and Vision Insurance
- Voluntary 457(b) deferred compensation retirement savings plan

Position Open until filled.

Please submit resumes to Human Resources

Contact:

Tamar Rivera

Human Resources

Indian River Mosquito Control District

5655 41st Street, Vero Beach, FL 32967

(772) 562-2393

t.rivera@irmcd.org

Under Florida law, email addresses are public records. If you do not want your e-mail address released in response to a public record request do not send electronic mail to this entity. Instead, contact this office by phone.



Indian River Mosquito Control District Position Description

COASTAL INSPECTOR I/II

Department: Larvicide

Rev: **2/05/2025**

Reports To: Larvicide **Supervisor**

FLSA: **Non-exempt**

Pay Grade: **2/4**

General Scope of Work

Perform field inspections for larval mosquito production within the coastal wetlands, impoundments and islands within the Indian River Lagoon and apply control methods as necessary. Field identifies typically encountered mosquito larvae and adults to genus, accurately collecting, logging, reporting findings, and maintaining inspection trails.

Essential Functions (without accommodation)

The essential functions listed are intended to be representative of the tasks performed within this position. The omission of an essential function does not preclude the District from assigning duties not listed herein if such functions are logical assignment to the position.

- Perform field inspections at predetermined locations within assigned route to identify presence of mosquitoes, identify problem species, determine a proper treatment, and apply approved control measure(s). Records and report findings within database and to the supervisor as per protocol.
- Apply mosquito pesticides to identified areas of mosquito production as appropriate and in accordance with the product label. Responsible for wearing appropriate personal protective equipment (PPE), follow District safety policies and procedures, and comply with all local, state and federal regulations.
- Inspect and record rainfall amounts, culvert status, impoundment water and tide levels. Record inspection and treatment data utilizing District-assigned equipment and report to supervisor as per protocol. Report any malfunctioning data-collection equipment to supervisor.
- Maintain inspection trails and bridges within assigned routes to ensure they are kept hazard-free and are in suitable condition to walk or drive. This work requires the use of a machete and chainsaw. Assist with the maintenance of other routes when requested. Report any unsafe trail conditions that require repair and/or maintenance to the supervisor.
- Maintain District-assigned equipment. Inspect truck, trailer, ATV and/or watercraft on routine basis; record findings and report any problems to Maintenance Supervisor; ensure the truck bed is kept clean, all containers are clearly labeled and covered, appropriate labels and SDS documents are readily available, and hand cans are in good working order. Follow protocol for charging and storing District-assigned computer hardware and equipment.
- Serve as a ULV driver, operating mosquito control ground adulticiding equipment in addition to regular duties for a minimum of five years.
- Perform tasks of other job descriptions as deemed necessary to fulfill the District's functions.

Typical Requirements

Education/Experience

- High school diploma, or Graduate Equivalency Diploma (GED).
- **Coastal Inspector II** requires three years of experience in mosquito control, mastering the roles and responsibilities of the position without direct supervision and oversight, along with satisfactory performance evaluations.

Licenses and Certifications

- Possession of, or ability to obtain, a valid Public Health Pest Control license from the Florida Department of Agriculture and Consumer Services within six months of employment. Must be maintained through employment.
- Possession of, or ability to obtain, a valid Florida Driver's License. Must be maintained through employment. Must be insurable with the District's insurance carrier.

Knowledge, Abilities, and Skills

- Knowledge of mosquito biology, including behavior, life cycle, habitats and identification of typically encountered mosquito larvae and adults to genus.
- Knowledge of standard equipment, tools, techniques and procedures used in an integrated mosquito control program.
- Knowledge and proficiency in computer data entry.
- Knowledge of state, federal and local laws governing mosquito control and pesticide applications and storage. Knowledge of safety rules and regulations and of the precautions to be taken to avoid accidents.
- Read maps and interpret aerial photographs to locate specified positions.
- Make detailed field observations and accurately record relevant data utilizing proprietary software programs; keep detailed, accurate records both in digital and hard-copy formats; and accurately enter detailed information into a database.
- Effectively interact and communicate with the public and District staff; communicate detailed reports and observations; follow detailed verbal instructions; and read and understand chemical label instructions written in English.
- Operate and routinely maintain a 4-wheel drive vehicle with associated trailer, an all-terrain vehicle (ATV), and/or motorized watercraft. Ability to drive and back-up a truck with a trailer on rough terrain.
- Physical strength and agility to work outside, occasionally under adverse weather conditions. Physically capable of operating an ATV or boat for extended periods of time or pulling spray hoses through rough terrain for extended periods of time and capable of carrying backpack application equipment.
- Able to operate spraying equipment with manual dexterity necessary to manipulate small equipment and tools and to operate an ATV while applying pesticide with a hand-held sprayer and maintaining proper application dosages in a broad range of habitats.
- Possession of basic swimming and water safety skills necessary to survive hazards associated with aquatic activities and environments.
- Be aware of environmental surroundings, hear heavy equipment back-up warning signals, visually inspect surrounding area for potential hazards and avoid wildlife.
- Perform skilled tasks without direct supervision.
- Work flexible hours, when necessary, including nights, weekends, and holidays.
- On occasion, attend out-of-town meetings, classes, and other events, some of which involve overnight stays.

Work Environment/Physical Requirements:

The physical demands and work environment characteristics described here are representative of those that must be met by an employee to successfully perform the essential functions of this job. Reasonable accommodations may be made to enable individuals with disabilities to perform essential functions.

Physical Requirements: Heavy physical activity is required on a regular basis including lifting up to 50 pounds, reaching and pulling with arms, stooping, kneeling and bending frequently and walking for long distances and climbing over and around natural obstacles. Excellent vision, both close and distance, is frequently required.

Work Environment: This position involves work in both inside and outside environmental conditions and may encounter wildlife, noise, vibration, proximity to moving parts, working in high places, exposure to chemicals, fumes, odors, and oils and may be required to wear a respirator. The work environment varies but includes warehouses, office buildings, vehicles, mangroves, and fields. Regular exposure to all types of weather is required as the position is required to work outside, exposed to sun, rain, mud, and insects. Frequent local travel is required. Noise level is usually low but occasional exposure to moderate noise levels when around pony motors. Working with and around chemicals, which are stored, handled, applied/used and disposed of according to exact labeling instructions, is frequently required.