



Florida Arbovirus Surveillance Week 26: June 23-29, 2024

Arbovirus surveillance in Florida includes endemic mosquito-borne viruses such as West Nile virus (WNV), Eastern equine encephalitis virus (EEEV), and St. Louis encephalitis virus (SLEV), as well as exotic viruses such as dengue virus (DENV), chikungunya virus (CHIKV), Zika virus (ZIKV) and California encephalitis group viruses (CEV). Malaria, a parasitic mosquito-borne disease is also included. During the period of June 23-29, 2024, the following arboviral activity was recorded in Florida.

WNV activity: No human cases of WNV infection were reported this week. No horses with WNV infection were reported this week. No sentinel chickens tested positive for antibodies to WNV this week. No mosquito pools tested positive for WNV this week. In 2024, positive samples from seven sentinel chickens have been reported from three counties.

SLEV activity: No human cases of SLEV infection were reported this week. No sentinel chickens tested positive for antibodies to SLEV this week. In 2024, two sentinel chickens have been reported from two counties.

EEEV activity: No human cases of EEEV infection were reported this week. Three horses with EEEV infection were reported this week in Columbia and Holmes counties. Six sentinel chickens tested positive for antibodies to EEEV this week in Leon and Walton counties. In 2024, positive samples from 37 sentinel chickens, 14 horses, two emus, and one emu flock have been reported from 23 counties.

International Travel-Associated Dengue: Seven cases of dengue were reported this week in persons that had international travel. In 2024, 244 travel-associated dengue cases have been reported.

Dengue Cases Acquired in Florida: Two cases of locally acquired dengue were reported this week. In 2024, 10 cases of locally acquired dengue have been reported from four counties.

International Travel-Associated Chikungunya Fever Cases: No cases of chikungunya fever were reported this week in persons that had international travel. In 2024, three cases of travel-associated chikungunya fever have been reported.

Chikungunya Fever Cases Acquired in Florida: No cases of locally acquired chikungunya fever were reported this week. In 2024, no cases of locally acquired chikungunya fever have been reported.

International Travel-Associated Zika Fever Cases: No cases of Zika fever were reported this week in persons that had international travel. In 2024, no travel-associated Zika fever cases have been reported.

Zika Fever Cases Acquired in Florida: No cases of locally acquired Zika fever were reported this week. In 2024, no cases of locally acquired Zika fever have been reported.

Advisories/Alerts: Hillsborough, Holmes, Nassau, and Pasco counties are currently under a mosquito-borne illness advisory. Miami-Dade and Monroe counties are currently under a mosquito-borne illness alert. No other counties are currently under a mosquito-borne illness advisory or alert.

There are currently multiple travel health notices from the Centers for Disease Control and Prevention related to mosquito-borne diseases.

Dengue			Oropouche		Chikungunya	Yellow Fever
Africa and the Middle East	Americas	Asia and the Pacific Islands	Caribbean	South America	Asia	Africa
Afghanistan	Argentina	Cambodia	Cuba	Bolivia	Timor-Leste	Nigeria
Burkina Faso	Brazil	Fiji		Brazil	Maldives	
Ethiopia	Colombia	Indonesia		Colombia		
Mali	Costa Rica	Laos		Peru		
Mauritius	Curaçao	Samoa				
Sudan	Ecuador	Singapore				
	French Guiana	Sri Lanka				
	Guadeloupe					
	Guatemala					
	Guyana					
	Honduras					
	Martinique					
	Mexico					
	Nicaragua					
	Panama					
	Paraguay					
	Peru					
	Uruguay					

Level 1 Travel Health Notice, Level 2 Travel Health Alert: wwwnc.cdc.gov/travel/notices.

For a map of arboviral disease activity in the United States visit: <https://www.cdc.gov/fight-the-bite/at-risk/index.html>.

2024 Human Case Summary

2024 International Travel-Associated Chikungunya Cases: Three cases with onset in 2024 have been reported in individuals with travel history to a chikungunya-endemic area in the two weeks prior to onset. Counties reporting cases were: Broward, Orange, and Pinellas. Country of origin was Brazil (3).

2024 International Travel-Associated Dengue Cases: Two hundred and forty-four cases with onset in 2024 have been reported in individuals with travel history to a dengue-endemic area in the two weeks prior to onset. Counties reporting cases were: Alachua, Brevard (3), Broward (39), Charlotte (2), Collier, Duval (6), Flagler, Hernando, Hillsborough (18), Lake, Lee (9), Miami-Dade (104), Okaloosa, Orange (17), Osceola (11), Palm Beach (13), Pasco (2), Pinellas (3), Polk (3), Santa Rosa, Sarasota, Seminole, St. Lucie (3), and Volusia (2). Thirty-five cases were reported in non-Florida residents. Three cases met the criteria for severe dengue (dengue shock syndrome [DSS] or dengue hemorrhagic fever [DHF]). Those at greater risk for DSS and DHF include persons with previous dengue infection, pregnant women, infants, the elderly, and those with co-morbidities. However, severe illness can also occur in those without any of these risk factors. In 2024, 193 cases of dengue reported in Florida have been serotyped by PCR. Please see the table below for a breakdown of cases by country of origin and serotype.

Country of Exposure	DENV-1	DENV-2	DENV-3	DENV-4	DENV-2 /DENV-3	Unknown	Total
Argentina	3	4				6	13
Barbados	1	1				2	4
Barbados/Trinidad and Tobago		1					1
Brazil	35	11				11	57
Brazil/Paraguay		1					1
Colombia	4	7	3	1		5	20

Costa Rica			3				3
Cuba		1	57	7	1	13	79
Dominican Republic			9			2	11
El Salvador	2						2
Guatemala			3				3
Guyana			1				1
Honduras			3		1	1	5
Indonesia		1				1	2
Jamaica		1				1	2
Mexico	2	1	5				8
Netherlands Antilles		1					1
Nicaragua				1		2	3
Paraguay		3					3
Peru	2	2					4
Philippines						1	1
Puerto Rico	1	3	4			2	10
Saint Barthélemy		2				1	3
Trinidad and Tobago		1	2				3
US Virgin Islands						1	1
Venezuela			1			2	3
Total	50	41	91	9	2	51	244

2024 Dengue Cases Acquired in Florida: In 2024, 10 cases of locally acquired dengue have been reported in Hillsborough, Miami-Dade (6), Monroe (2), and Pasco counties with onset in January (3), February, March (2), April, and June (3). Eight cases have been serotyped by PCR. Please see the table below for a breakdown of cases by county and serotype.

County of Exposure	DENV-1	DENV-3	Unknown	Total
Hillsborough	1			1
Miami-Dade		4	2	6
Monroe	2			2
Pasco		1		1
Total	3	5	2	10

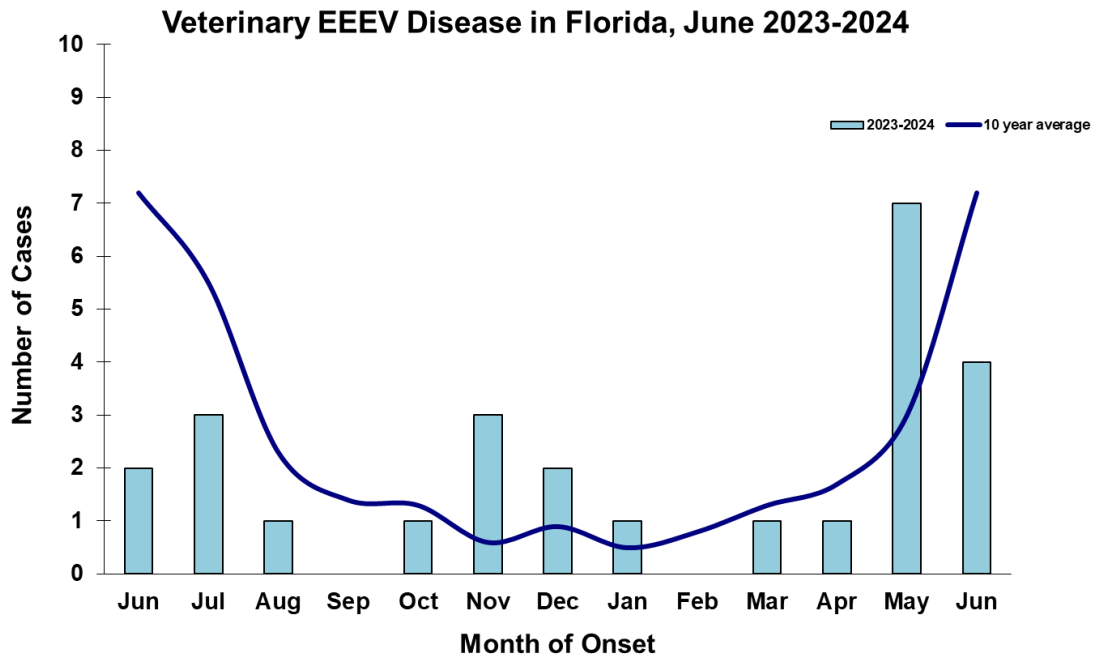
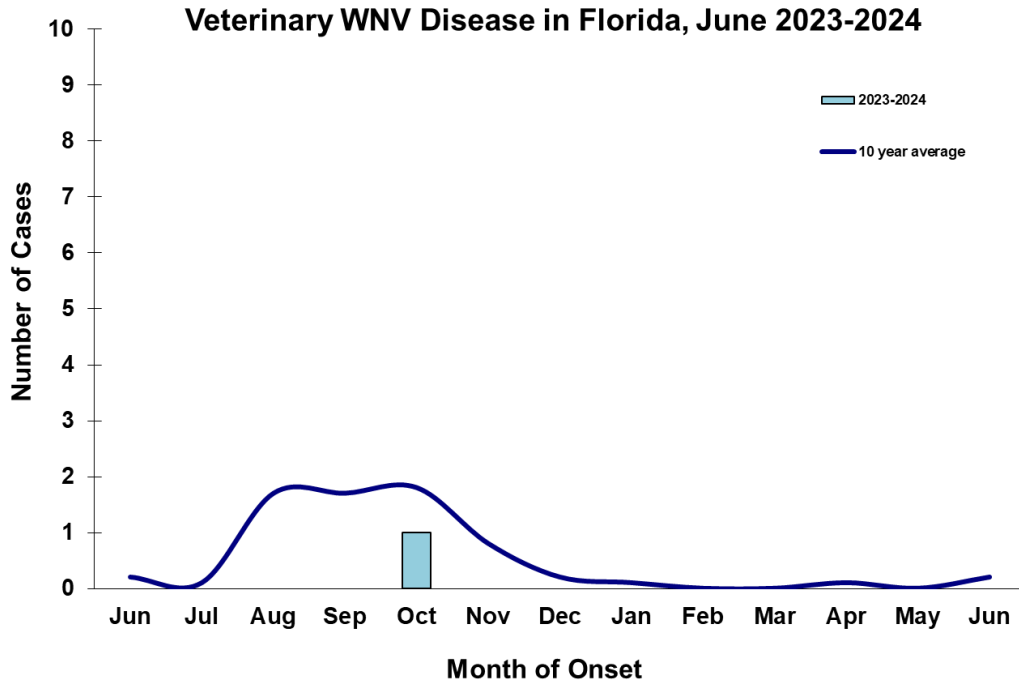
2024 International Travel-Associated Malaria Cases: Twenty-seven cases of malaria with onset in 2024 have been reported in individuals with a travel history to a malaria-endemic area. Counties reporting cases were: Broward (3), Collier, Duval (3), Escambia, Hillsborough, Lee, Marion, Miami-Dade (3), Okaloosa, Orange (5), Osceola (2), Palm Beach, Pinellas (2), Polk, and Sarasota. One case was reported in a non-Florida resident. Please see the table below for a breakdown of cases by country of origin and *Plasmodium* species.

Country of Exposure	<i>Plasmodium falciparum</i>	<i>Plasmodium ovale</i>	<i>Plasmodium vivax</i>	Total
Africa	1			1
Angola	1			1
Cameroon	1			1
Central/South America			6	6
Chad	1			1
Ecuador			1	1
Ethiopia			1	1
Gabon	1			1
Ghana	1			1
Honduras			1	1
Kenya	1			1
Malawi	1			1
Mexico			2	2
Nicaragua			1	1
Nigeria	3			3
Republic of the Congo		1		1
Sierra Leone	1			1
Solomon Islands			1	1
Uganda/Rwanda	1			1
Total	13	1	13	27

Veterinary Cases**

**Veterinary cases are reported by date of onset. Only mammalian veterinary cases are included in the graphs.

Three horses with EEEV infection were reported this week in Columbia and Holmes counties.



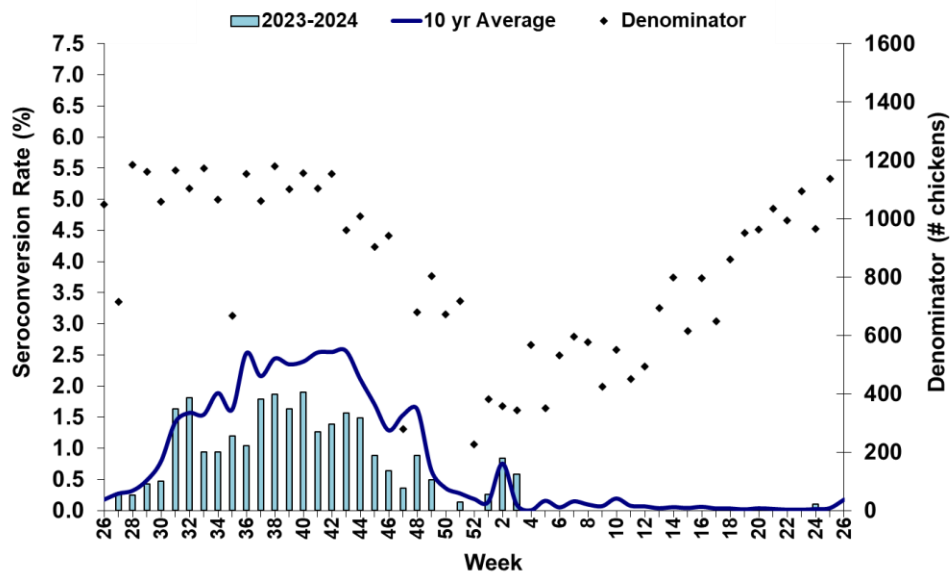
Sentinel Chickens

The table below is for the reporting of confirmatory laboratory results from this week. Some of the samples were collected at earlier dates. The date of collection is recorded for samples collected on that day along with the total number of positives and the corresponding seroconversion rate for the week the sample was collected.

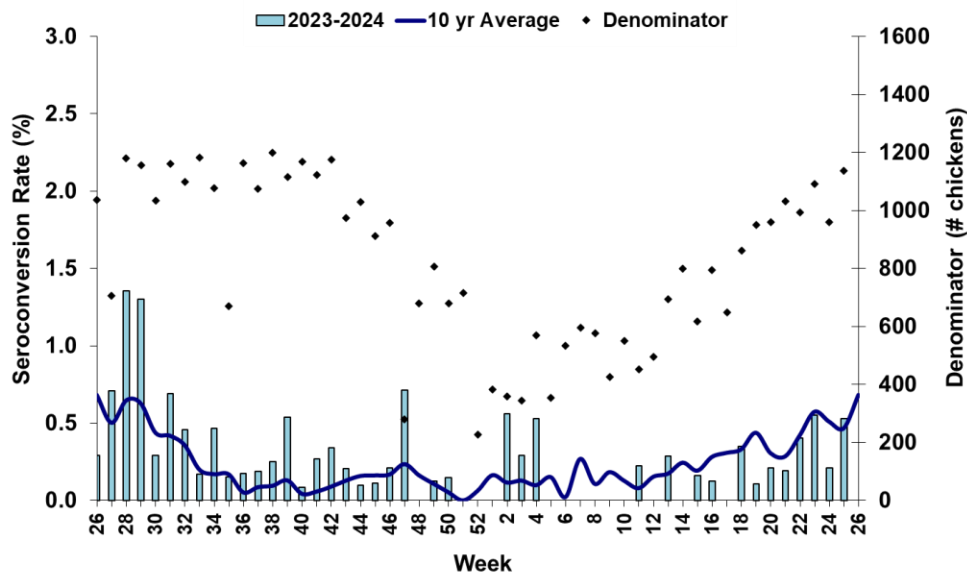
Six sentinel chickens tested positive for antibodies to EEEV this week in Leon and Walton counties. Five sentinel chickens tested positive for antibodies to a flavivirus this week in Nassau County.

County	Collection Date	Seroconversion Rates (%)						County Totals	
		Flavi	SLEV	WNV	Alpha	EEEV	HJV	Collection Week	YTD
Leon	6/18/2024				2.63	2.63		1 EEEV	1 EEEV
Nassau	5/3/2024	8.33						3 Flavivirus	3 EEEV, 5 Flavivirus
	5/18/2024	2.78						1 Flavivirus	
	5/23/2024	2.78						1 Flavivirus	
Walton	6/17/2024				5.26	5.26		5 EEEV	12 EEEV, 1 SLEV

Sentinel Seroconversions to WNV in Florida, 2023–2024



Sentinel Seroconversions to EEEV in Florida, 2023–2024



Mosquito Pools

No mosquito pools tested positive for WNV or EEEV this week.

County	Collection Date	Result	Species	County YTD

Dead Birds

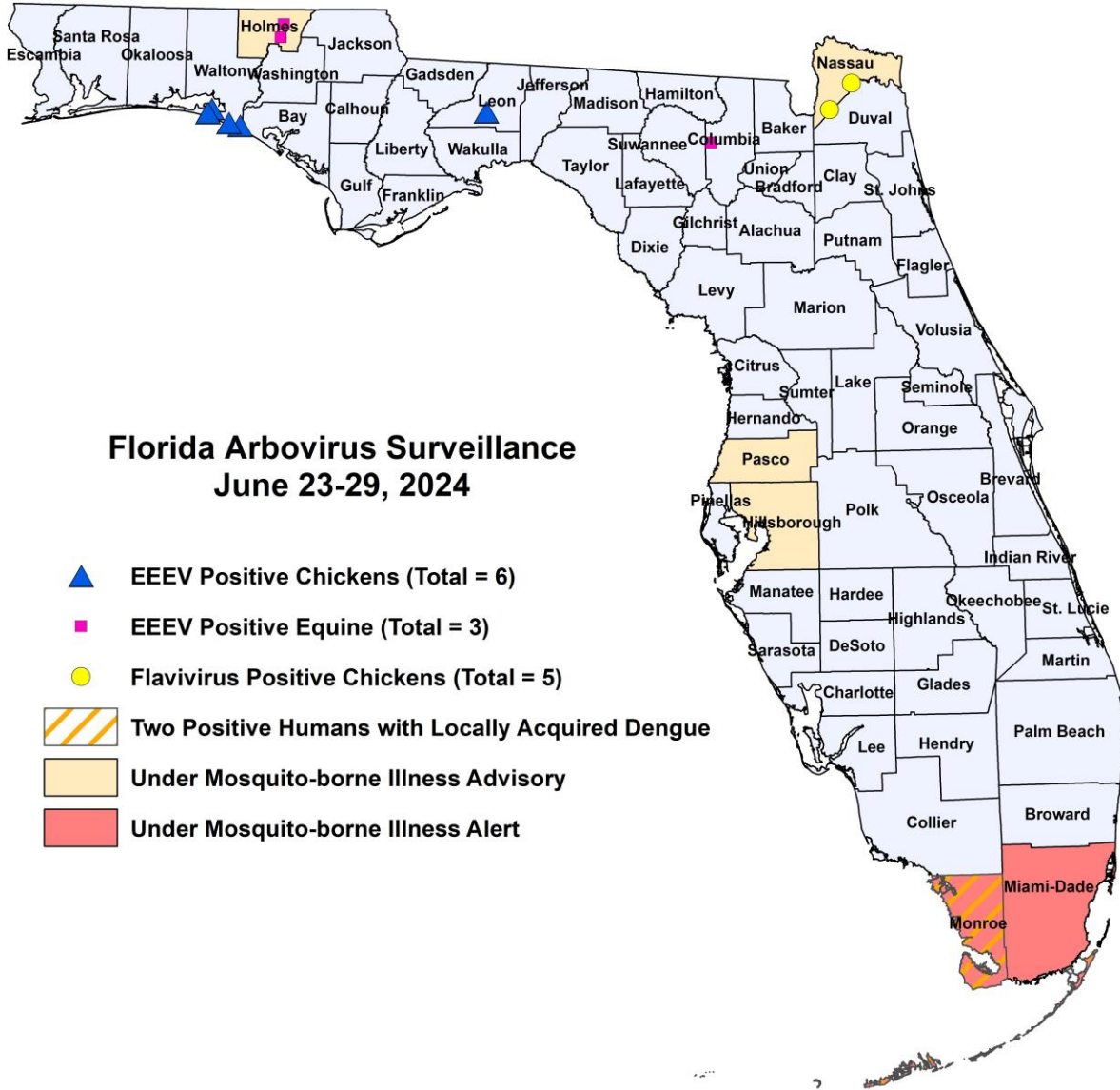
The Fish and Wildlife Conservation Commission (FWC) collects reports of dead birds, which can be an indication of arbovirus circulation in an area. This week, 33 reports representing a total of 65 dead birds, including three crows, four raptors, and six doves, were received from 14 counties.

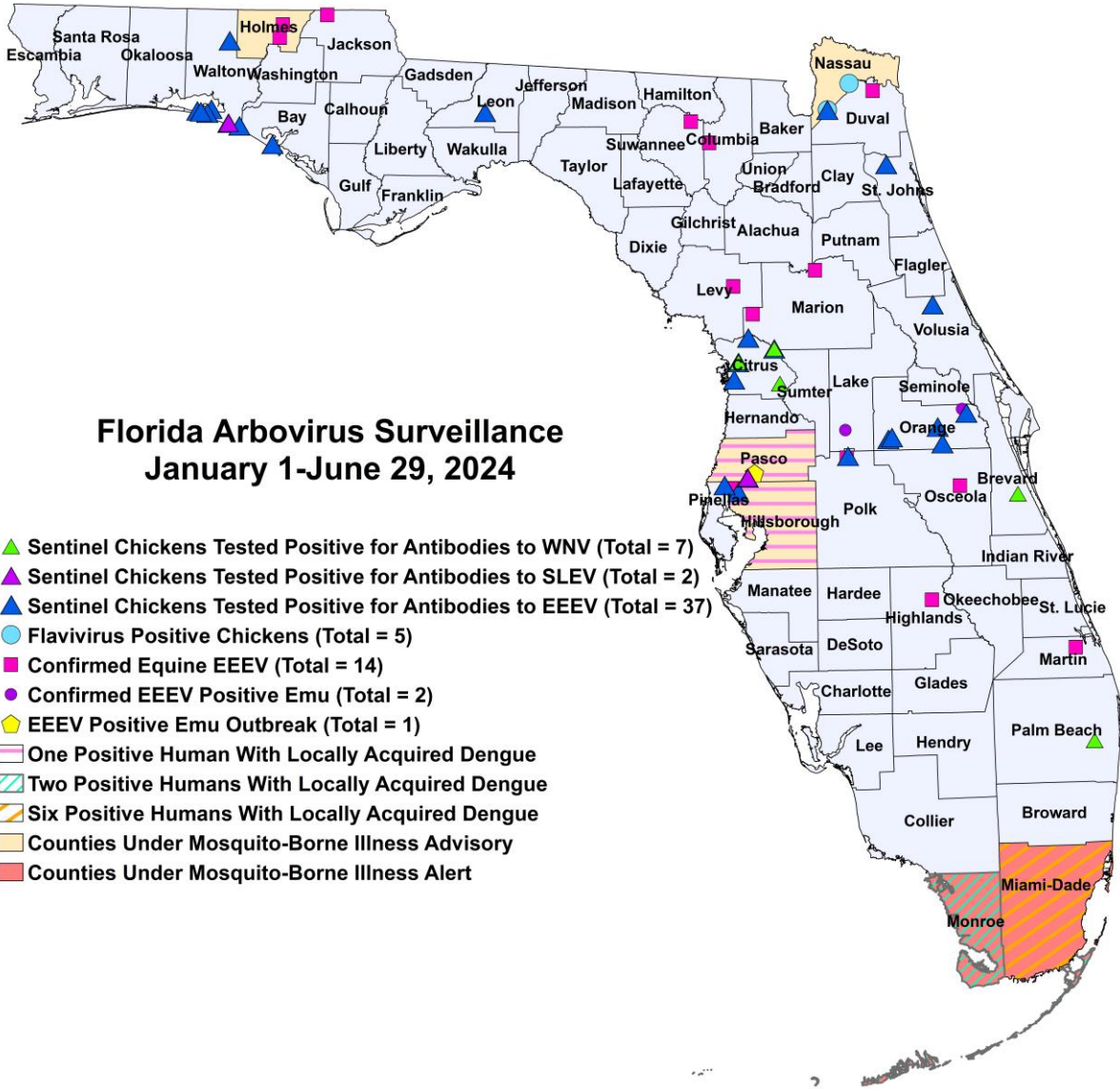
In 2024, 653 reports representing a total of 1390 dead birds (51 crows, 15 jays, 94 raptors, 66 doves) were received from 48 of Florida's 67 counties.

2024

County	Total Dead Birds	Crows	Jays	Raptors	Doves
Brevard	4	0	0	0	0
Broward	9	0	0	0	0
Hernando	1	0	0	1	0
Hillsborough	2	0	0	0	1
Lee	2	0	0	1	0
Marion	2	2	0	0	0
Martin	1	0	0	0	0
Miami-Dade	5	0	0	0	5
Nassau	1	0	0	0	0
Orange	4	0	0	0	0
Palm Beach	3	0	0	0	0
Pasco	2	1	0	0	0
Pinellas	13	0	0	1	0
Volusia	16	0	0	1	0

Maps





Florida Arbovirus Surveillance January 1-June 29, 2024

- ▲ Sentinel Chickens Tested Positive for Antibodies to WNV (Total = 7)
- ▲ Sentinel Chickens Tested Positive for Antibodies to SLEV (Total = 2)
- ▲ Sentinel Chickens Tested Positive for Antibodies to EEEV (Total = 37)
- Flavivirus Positive Chickens (Total = 5)
- Confirmed Equine EEEV (Total = 14)
- Confirmed EEEV Positive Emu (Total = 2)
- ◆ EEEV Positive Emu Outbreak (Total = 1)
- One Positive Human With Locally Acquired Dengue
- Two Positive Humans With Locally Acquired Dengue
- Six Positive Humans With Locally Acquired Dengue
- Counties Under Mosquito-Borne Illness Advisory
- Counties Under Mosquito-Borne Illness Alert

2024 Mosquito-Borne Disease Activity by County

County	Humans	Equines	Sentinel Chickens	Other
Bay			2 EEEV (5/28, 6/10)	
Brevard			1 WNV (1/3)	
Citrus			5 WNV (1/9, 1/15) 6 EEEV (1/9, 1/15, 2/26, 3/11, 5/20)	
Columbia		1 EEEV (6/16)		
Duval		1 EEEV (5/25)		
Highlands		1 EEEV (5/25)		
Hillsborough	1 dengue (June)	1 EEEV (5/26)	1 EEEV (6/3)	
Holmes		2 EEEV (6/19)		
Jackson		1 EEEV (5/30)		
Lake				1 EEEV emu (2/6)
Leon			1 EEEV (6/18)	
Levy		1 EEEV (5/21)		
Marion		1 EEEV (1/31, 3/29)		
Martin		1 EEEV (5/27)		

County	Humans	Equines	Sentinel Chickens	Other
Miami-Dade	6 dengue (January (2), February, March (2), April)			
Monroe	2 dengue (June (2))			
Nassau			3 EEEV (5/3) 5 Flavivirus (5/3, 5/18, 5/23)	
Orange			5 EEEV (2/26, 3/25, 5/6, 5/28, 6/3)	1 EEEV emu (3/16)
Osceola		1 EEEV (5/2)		
Palm Beach			1 WNV (3/18)	
Pasco	1 dengue (January)		1 EEEV (5/13) 1 SLEV (6/10)	1 EEEV emu flock outbreak (4/22 for first emu)
Pinellas			2 EEEV (5/20, 5/28)	
Polk		1 EEEV (4/9)	1 EEEV (6/10)	
St. Johns			1 EEEV (6/3)	
Suwannee		1 EEEV (6/3)		
Volusia			2 EEEV (1/22, 4/8)	
Walton			12 EEEV (3/25, 4/15, 5/13, 5/28, 6/3, 6/4, 6/17) 1 SLEV (4/1)	

Acknowledgements and Data Sources

Contributors: Andrea Morrison, PhD, MSPH, Rebecca Zimler, PhD, MPH, and Danielle Stanek, DVM, DOH Bureau of Epidemiology; Lea Heberlein, DrPH; Maribel Castaneda, and Amanda Davis, BS; DOH Bureau of Public Health Laboratories; Carina Blackmore, DVM, PhD, DOH Division of Disease Control and Health Protection.

For more surveillance information, please see the DOH website at: www.floridahealth.gov/diseases-and-conditions/mosquito-borne-diseases/surveillance.html

For arbovirus surveillance information for the United States, please see the Centers for Disease Control and Prevention website at: www.cdc.gov/ncidod/dvbid/westnile/surv&control.htm

Case tallies included in the weekly Florida arbovirus surveillance report include confirmed and probable cases for EEE, WNV infection, SLE, dengue, chikungunya, and malaria by date of onset. Suspect cases are not included. Activity is mapped by county of exposure rather than county of residence. Case definitions being used in Florida are consistent with national criteria provided by the Council of State and Territorial Epidemiologists (CSTE) and may be viewed at: www.floridahealth.gov/diseases-and-conditions/disease-reporting-and-management/disease-reporting-and-surveillance/index.html. Case tallies reported by CDC do not include suspect cases and cases are reported by patient state of residence rather than where the exposure occurred. Data is provided by county health departments, Department of Health Bureau of Public Health Laboratories, Department of Agriculture and Consumer Services, mosquito control agencies, Florida Fish and Wildlife Conservation Commission, medical providers and veterinarians. Equine cases are provided by the Department of Agriculture and Consumer Services.